

# COVID-19 Wastewater

MHOA October 2022

Anna Kaplan, Cambridge Public Health Department



Cambridge  
Public Health  
Department



**CHA** Cambridge  
Health Alliance

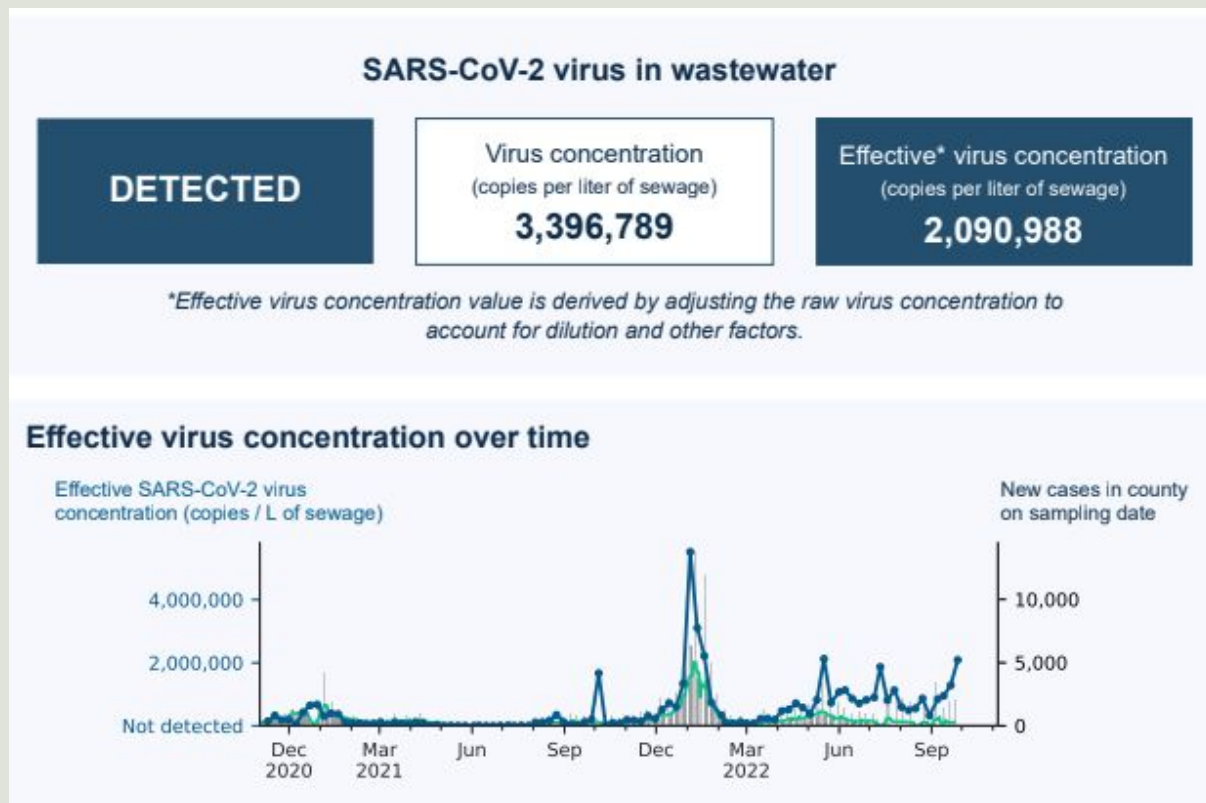


# Cambridge Wastewater Timeline

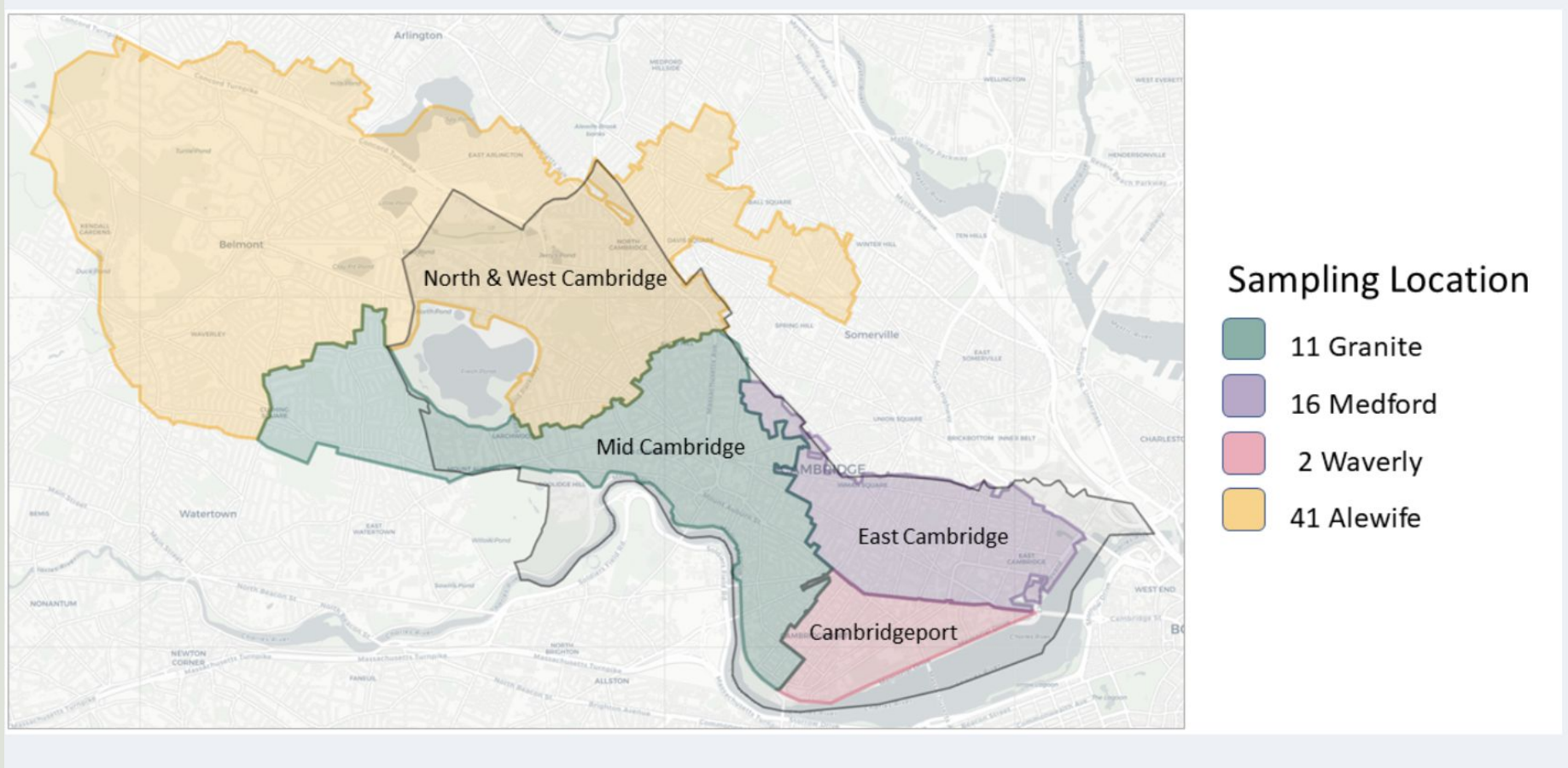
- **November 2020:** Cambridge divided into four quadrants; weekly local sampling
- **September 2021:** Additional four “sentinel sites” added
  - 3 high case burden neighborhoods (very small catchments)
  - 1 long term care
- **November 2021:** End sentinel site sampling
  - LTCF: redundant with surveillance testing; contamination of sample from laundry
  - High burden neighborhoods: Variability/”noise” in data hard to interpret
    - Successful walking outreach did occur!
- **September 2022:**
  - Extended contract through June 2023 for four large catchments
  - Hope for further testing for other pathogens/areas of interest

# Current Use Case

- Four weekly sampling sites
- Public-facing dashboard of the results
- PDF & raw data reporting from Biobot
- Comparison with MWRA regional data



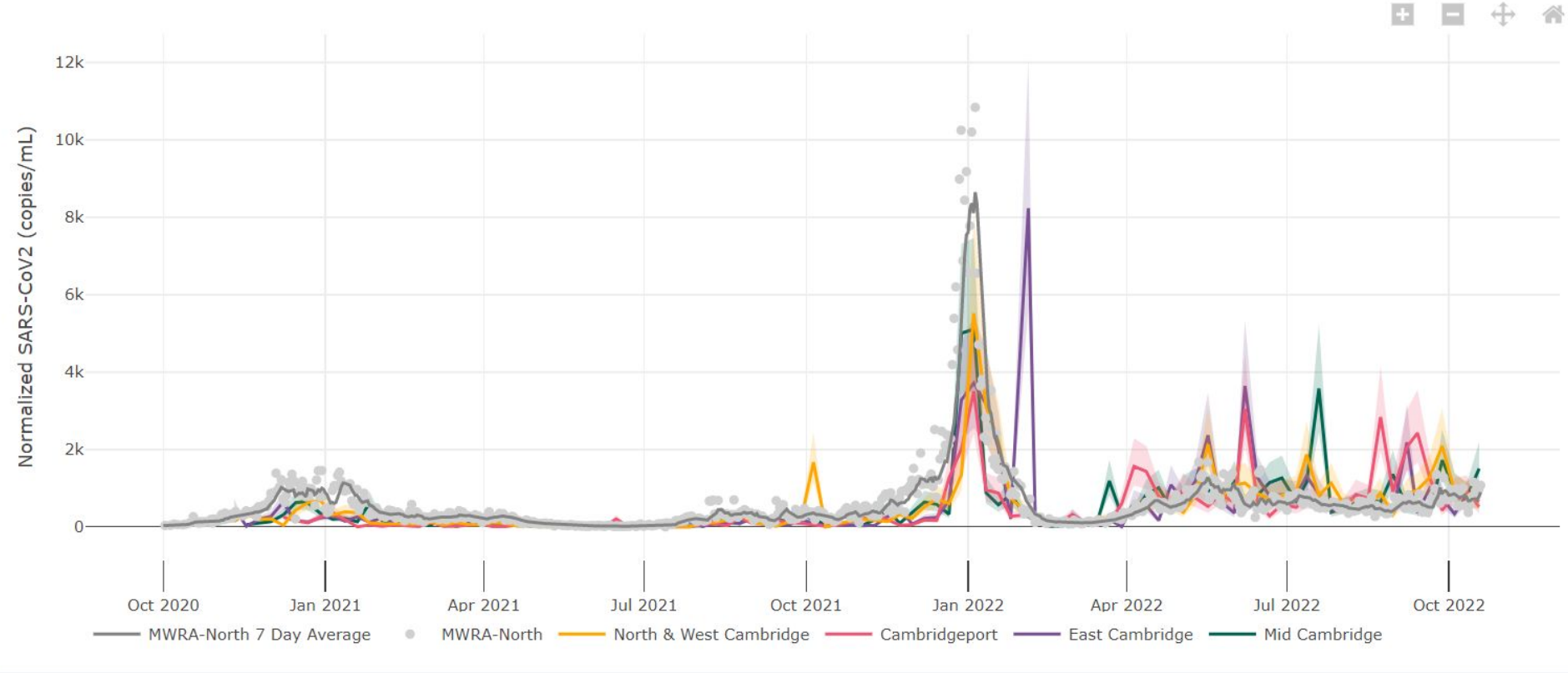
# Catchment Map



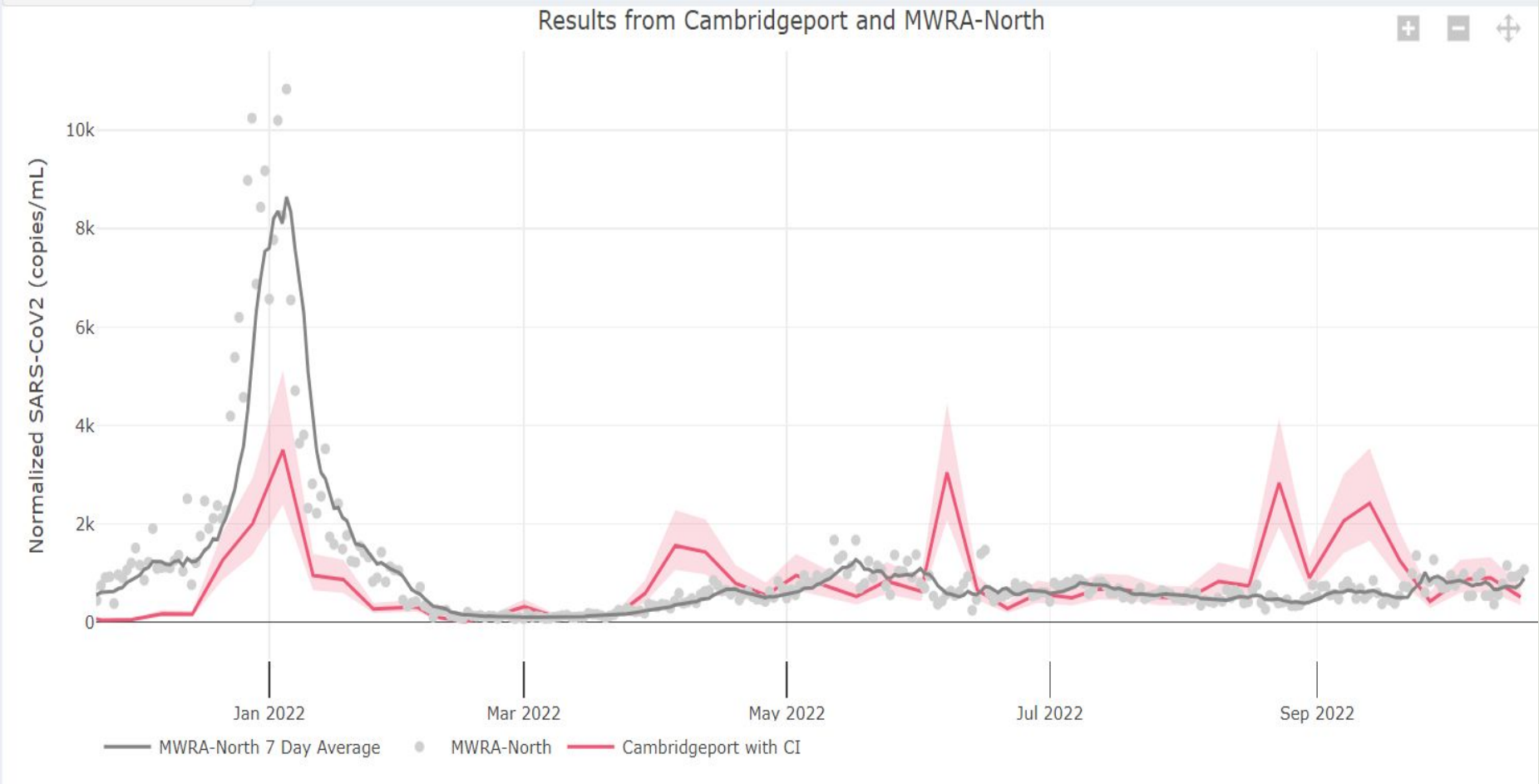
# Public Dashboard

## Weekly Municipal Wastewater Sampling Data

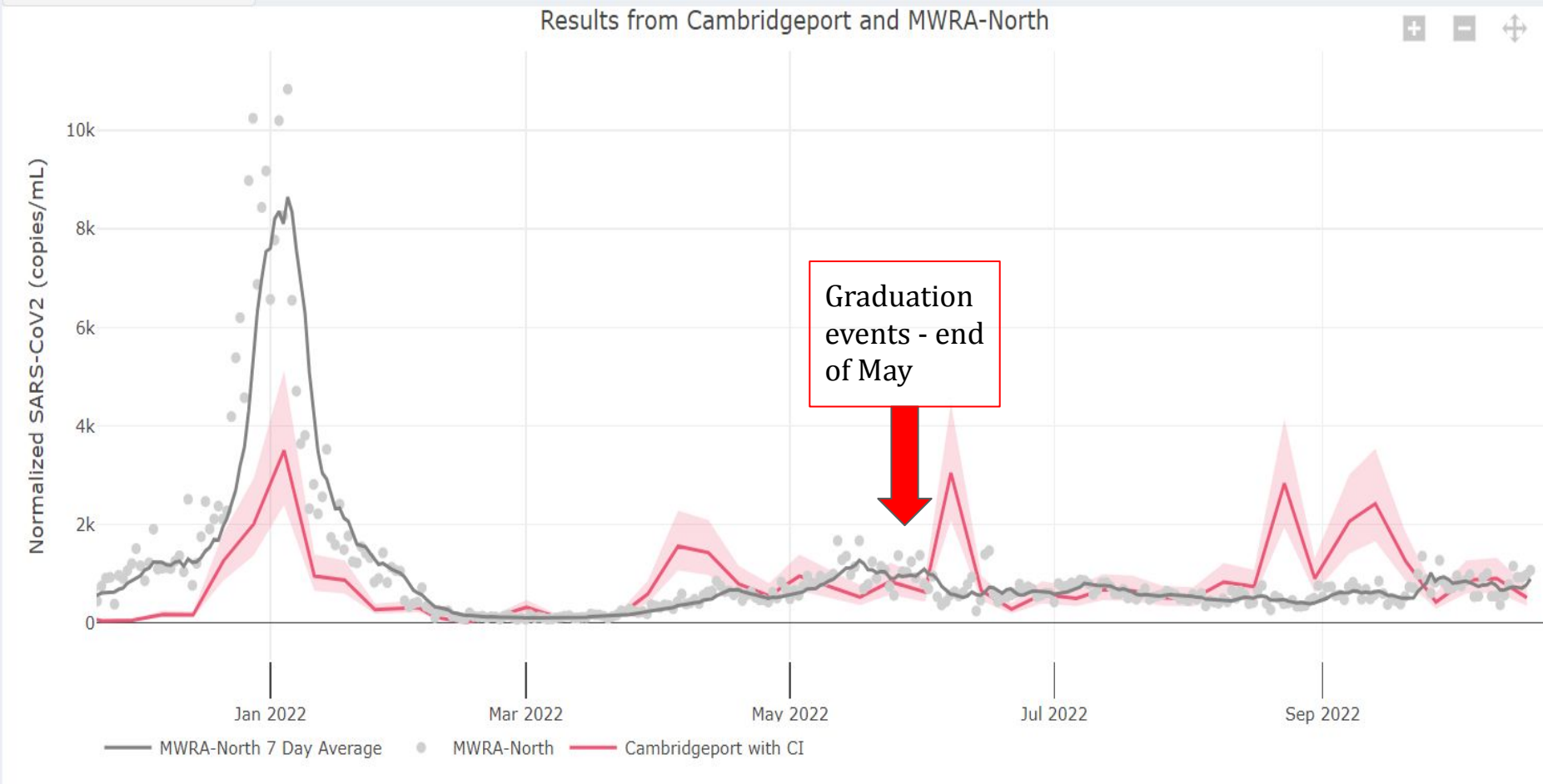
Select Sample Site ▾



# Public Dashboard



# Public Dashboard



# Public Engagement

- **General Public**

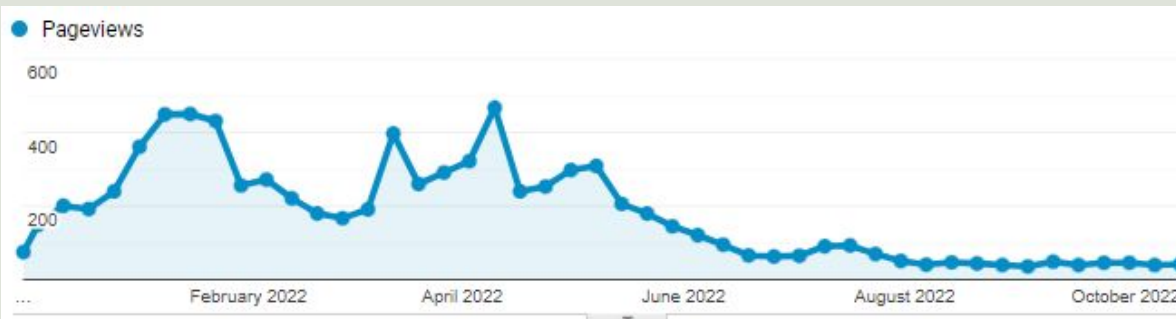
- **High point:** Avg. 383 viewers per week (Dec '21 - Feb '22)
- **Current:** Avg. 43 viewers per week (Labor Day '22 - present)
- Avg. of 4 minutes of engagement per visit
  - 1-2 min on the “New Cases page”;  
30 seconds on landing page

- **Collaboration with City staff and Local Politicians**

- High engagement from City Council
- Close collaboration with City OpenData & Comms groups

- **Outreach Team Deployment**

- Outreach teams deployed with masks, test kits, and general information in affected neighborhoods





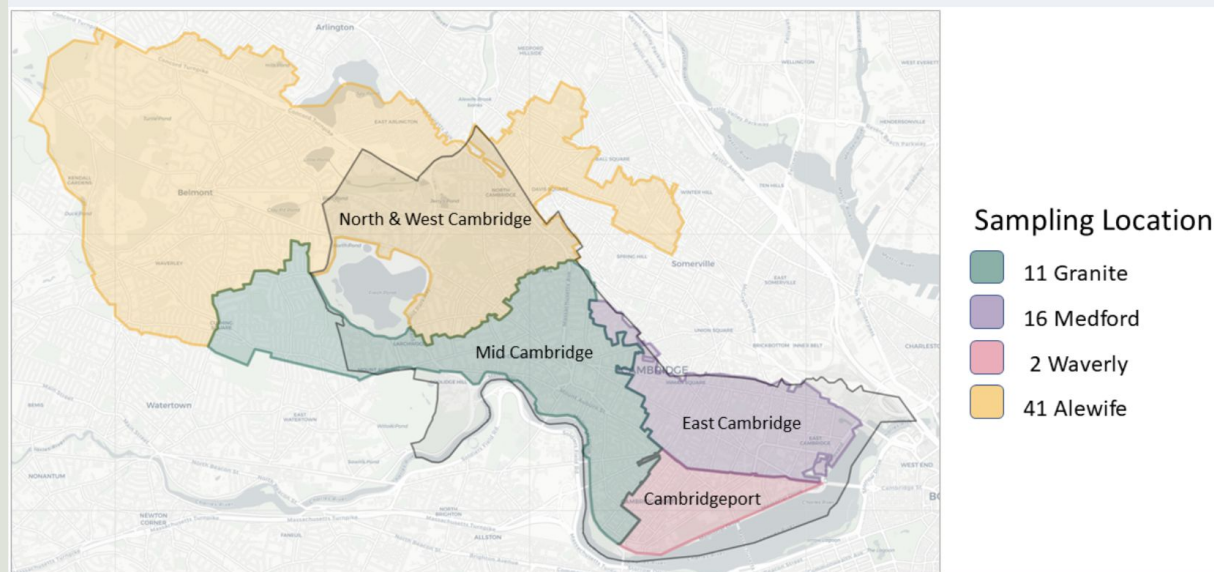
# Challenges

- **Granularity of data - large catchment areas**
  - Resident population of ~118,000 people
  - City population doubles during the day; what do the data tell us?
  - Hard to send an outreach team to hand out information

- **Catchments vs City borders**

- **Sentinel Sites**

- Redundant coverage
- Timing of signals
- Noise in data



# Future Directions for Local Wastewater

- Continue to monitor for unusual COVID-19 spikes
  - Regional context is key
- Emerging communicable disease
  - Novel viruses
  - Existing pathogens
    - MPV
    - Polio
    - Influenza
- High risk substance use

# Thank you!



Cambridge  
Public Health  
Department



**CHA** Cambridge  
Health Alliance

